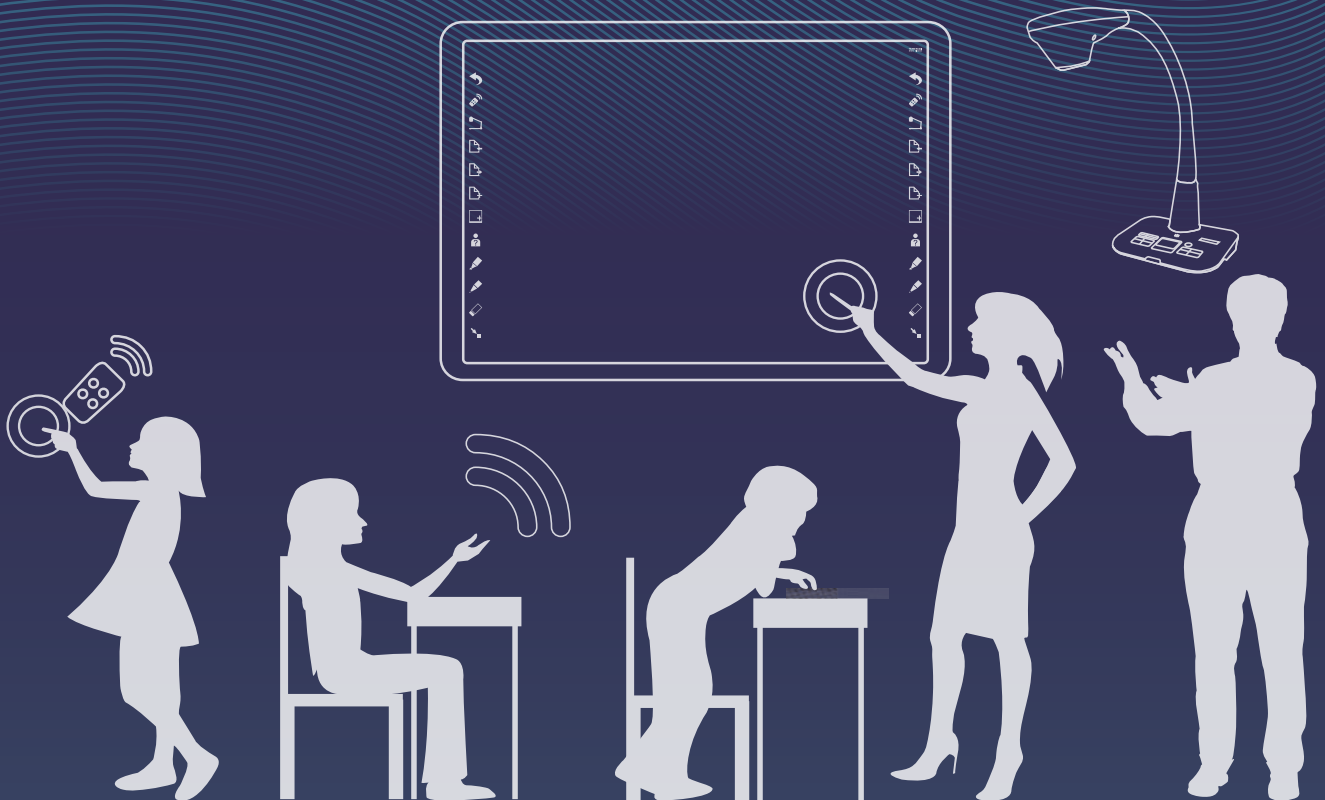


# ***TEAM Model***

## ***AI Smarter School***



# HiTeach3



## Integrated all equipment in the classroom

HiTeach perfectly connects the relevant equipment and devices in the classroom. From the teacher's mobile phone, student tablet, touchscreen, IRS remote control, lecture capture system, etc.,



## Various interaction modes in the classroom

HiTeach has a variety of interactive modes and teaching tools for teachers to use: answer, pick, challenge, spotlights, protractors, triangles, etc., not only to facilitate teacher's operation but also to grasp students' eyes.



## One and only “Smart pick out”

HiTeach has an unique smart picking function allows teachers to have more choices. In addition to random pick, teachers can pick out students according to group, answered questions, designated groups, changed answers, etc.



## Teaching Resources & Assessment Record in the cloud

The intergration with TEAM Model Cloud allows teachers to import teaching materials directly from cloud, as well as searching for relevant resources in the classroom. Record each student's interaction and answer status, combined with cloud services to produce personal reports.

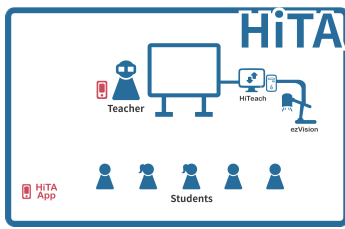
## Comparison of function supported to each version

	HiTeach Premium	HiTeach Pro	HiTeach Mobile	HiTeach TBL	HiTeach IRS	HiTeach TA
HiTA App	●	●	●	●	●	●
HiLearning Bot (Line, WeChat)	●	●	●			
HiLearning Mobile App	●	●	●			
HiLearning App	●	●		●		
Optional items						
IRS Keypad	●	●	●	●	●	
DSC (Distance TEAM Model Smarter Classroom) Service	●	●		●		
Sokrates Classroom Observation App <sup>[2]</sup>	● <sup>[1]</sup>	●	●	●	●	
Sokrates Teaching Analytics Service	● <sup>[1]</sup>	●	●	●	●	
ezStation Lecture Capture System	●	●	●	●	●	
Smart Voice Control	Supported with Haborad Smarter Touchscreen					

[1]:Already included in HiTeach Premium [2]:Need to be used with Sokrates Teaching Analytics Service

# TEAM Model Smarter Classroom

Versatile classroom solutions satisfy every teacher's need



## HiTA TEAM Model Smarter Classroom

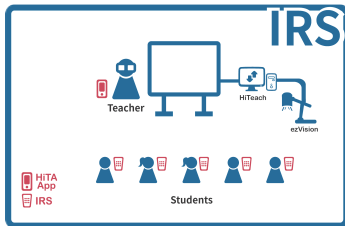
Provides the convenience of a mobile device when turning teacher's smartphones into teaching assisting tools.

Classroom Equipment:

Haboard Smarter Touchscreen, Teacher Smartphones

Corresponding Software:

HiTeach Smart Teaching Software, HiTA Teaching Assistant App



## IRS TEAM Model Smarter Classroom

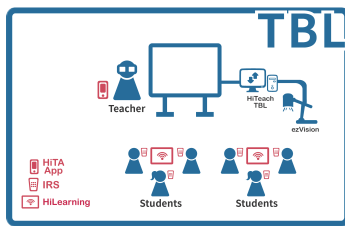
The Interactive Response System (IRS) allows teachers to stay updated on each student's learning progress.

Classroom Equipment:

Haboard Smarter Touchscreen, IRS

Corresponding Software:

HiTeach Smart Teaching Software, HiTA Teaching Assistant App, AClass ONE Learning Companion App



## TBL TEAM Model Smarter Classroom

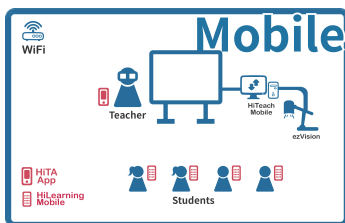
Heightening teamwork skills, cultivating diverse perspectives, and building trust from small-group learning settings.

Classroom Equipment:

Haboard Smarter Touchscreen, IRS, Group Tablets (one per group)

Corresponding Software:

HiTeach TBL Smart Teaching Software, HiTA Teaching Assistant App, HiLearning Student-tablet Learning System, AClass ONE Learning Companion App



## Mobile TEAM Model Smarter Classroom

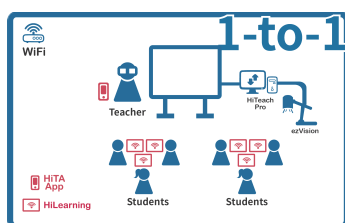
A mobile learning solution for vocational schools and higher education.

Classroom Equipment:

Haboard Smarter Touchscreen, Student smartphones

Corresponding Software:

HiTeach Mobile Smart Teaching Software, HiTA Teaching Assistant App, HiLearning Mobile Learning System, AClass ONE Learning Companion App



## 1-to-1 TEAM Model Smarter Classroom

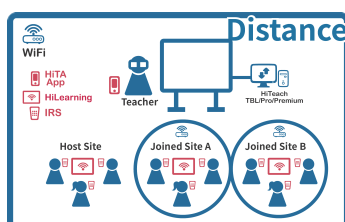
One tablet per student enhances 1-to-1 interaction in a classroom.

Classroom Equipment:

Haboard Smarter Touchscreen, Student tablets (one per student)

Corresponding Software:

HiTeach Pro Smart Teaching Software, HiTA Teaching Assistant App, HiLearning Student-tablet Learning System, AClass ONE Learning Companion App



## Distance TEAM Model Smarter Classroom

Bridging the gap between urban and rural education via video communication and data interaction, delivering quality education resources to rural students and help boost outcomes of country schools.

Classroom Equipment:

Haboard Smarter Touchscreen, Group tablets (one per group), ezStation Lecture Capture System

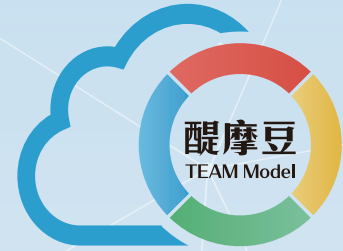
Corresponding Software:

DSC server, HiTeach TBL Smart Teaching Software, HiTA Teaching Assistant App, HiLearning Student-tablet Learning System, AClass ONE Learning Companion App

# TEAM Model Cloud

## Provide various AI Smarter School cloud service

TEAM Model Cloud integrates big data, IoT, and AI technology to provide diverse services for school to build up TEAM Model AI Smarter School.



## IES Smarter Teaching Service

### Integrate pre-course, in-class, and after-school teaching resources

IES Smart Teaching Service includes teaching resources at all stages of TEAM Model Smarter Classroom, including student lists, teaching materials, class notes, assessment scores, class videos, etc., and outputs learning history, grades, and diagnostic reports based on student interaction.



## AI Sokrates

### AI Coach for Teachers

Collect relevant data from classroom interaction and teaching methods, combined with observation experts and teachers' opinions through artificial intelligence. Automatically generate professional teaching analysis reports, provide more focused reference for discussion and classroom reflection, and assist teachers in professional development through AI technology.



Teaching Videos



Teaching Behavior Data



AI Analysis Report

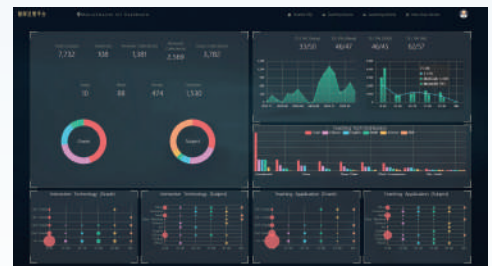


Professional Opinions

## Sokrates Management Service

### Assisting AI Smarter Schools in resource allocation and management

AI Sokrates dashboard helps schools to master the use of interactive technology in class. Assist school in teaching resource management and distribution and formulate the teacher development strategy.



## Smarter School Management Service

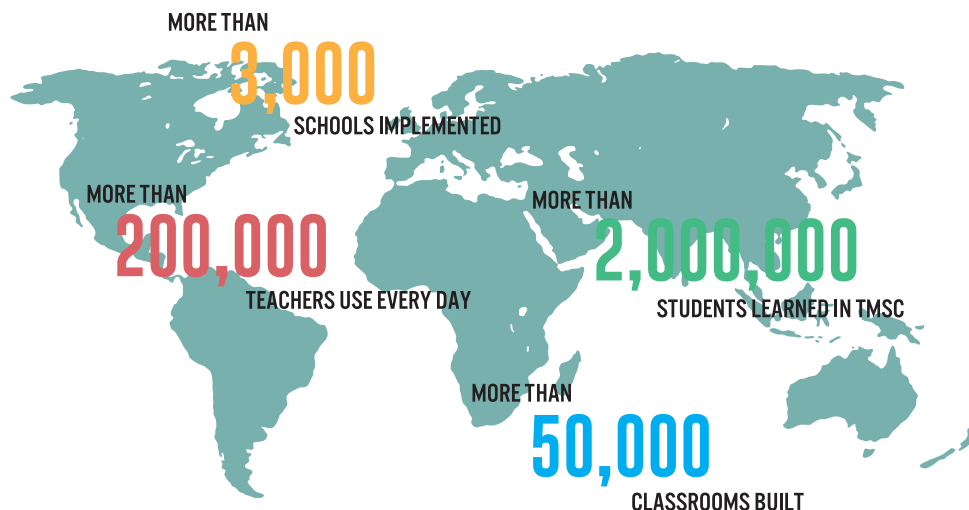
### Provide the most accurate AI Smarter School development information

Apply IoT technology to connect all the smarter classrooms in school, pay attention to the teaching situation, teaching resources, classroom activities, and classroom equipment data to help school establish management mechanism.





# Global TEAM Model AI Smarter Schools



## China, Zhuhai Yung Wing School Zhuhai

The school adheres to the spirit of Yung Wing and is committed to creating brand schools with traditional cultural characteristics and international education. In 2018, the school covered 83 TEAM Model TBL Smarter Classrooms, 2 1-to-1 Smarter Classrooms, 20 HiTA Smarter Classrooms, and 1 Premium Smarter Classroom. In 2019, became one of the founding members of the "TEAM Model AI Smart School Alliance".



## Hong Kong Student Aid Society Primary School

Student Aid Society Primary School first encountered the TEAM Model concept in 2014 completed a school-wide transformation to smarter classrooms in 2016 and has also relied on the "Distance TEAM Model Smarter Classroom" concept to promote the exchange of educational resources. The school has divided all teachers into seven in structural teams based on the subjects they teach and used the TEAM Model Smarter Classroom System to conduct routine smarter instructional research.



## Amman, Jordan Islamic Educational College

The Islamic Educational College adopted TEAM Model Smarter Classroom System in 2016 and completed the establishment of 36 IRS TEAM Model Smarter Classrooms within an year. All 80 teachers in the school attended a series of professional training sessions held by HABOOK to raise teaching expertise about usage of technology in teaching. In less than a year, the school has developed their own teaching model and become a symbolic smarter school in Jordan.



## Taoyuan City, Taiwan

Taoyuan City has implemented a smarter city program since 2015, and the Department of Education of Taoyuan has concurrently promoted the "Smarter Schools and Digital Academy" program, which has successfully established the TEAM Model Smarter Educational Support System in 341 classrooms at 32 schools within a short period of time. Taoyuan City's smarter teacher team won the championship of the 2017 and 2018 "Cross-Strait Smarter Lecture Contest", showing the effort that Taoyuan City has put into the development of smarter education.



# Haboard Smarter Touchscreen

— Interaction display designed for Teaching —



IoT  
Dashboard



4K Ultra  
Resolution



20 points  
multi-touch



Voice  
assistant

## New\* *IRS Clicker*

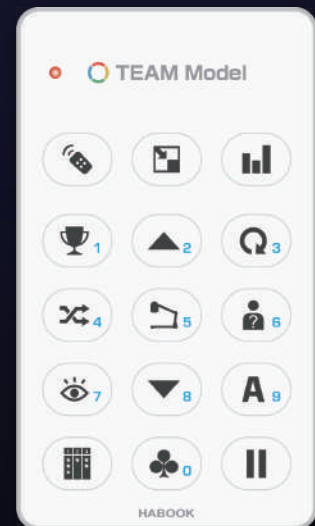
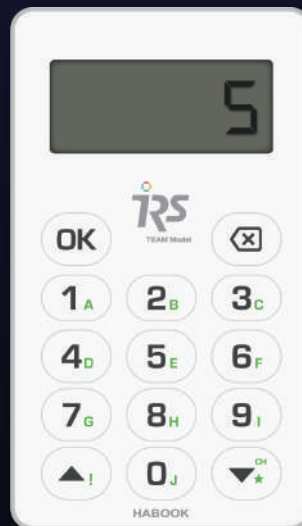
— Create a data-driven interactive classroom —



LCD Screen



360° Received



Multi answering



500K+ Clicks

## HABOOK Group

### Global Headquarter (Taipei)

Add 8F. No.149, Sec. 3, Xinyi Rd., Da'an Dist., Taipei City 106, Taiwan  
Tel +886-2-2325-5668  
Email habook@habook.com.tw

### China Headquarter (Chengdu)

Add 15F. 2nd Building, Chuangyi Mount., Yueqi Rd., Jinjiang District, Chengdu City, Sichuan, China  
Tel +86-400-0099-930



Website



Fanpage



YouTube